



# Computer Cases

continue the game from your  
checkpoint



OUR **COMPUTER CASES**

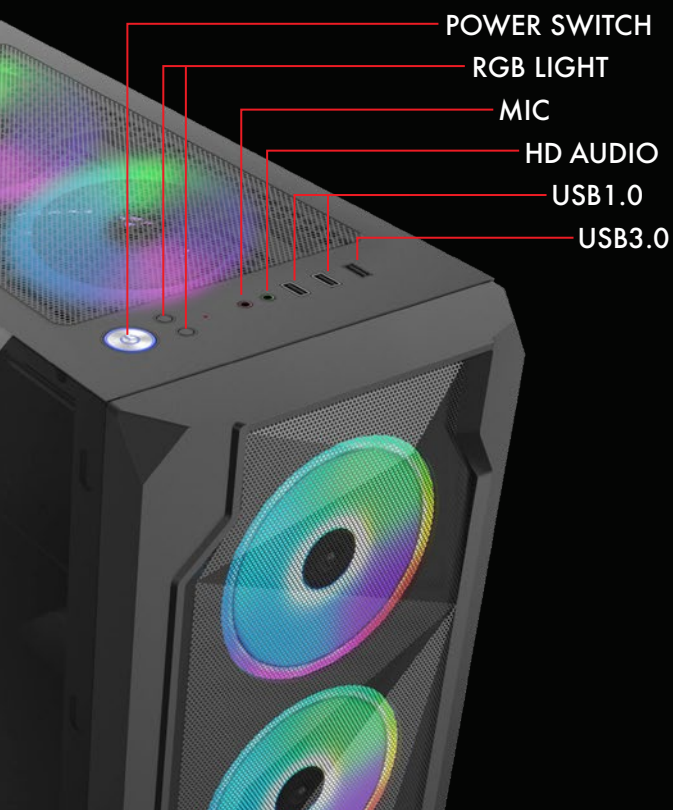
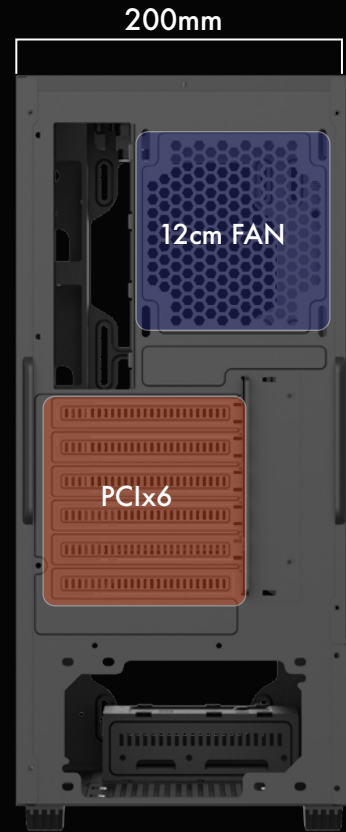
# ***PRO SERIES*** ***COMPUTER CASE***

*Gaming Cool*

**CP-300**  
**CP-300 RGB**



**PRO SERIES**  
**COMPUTER CASE**  
Gaming Cool

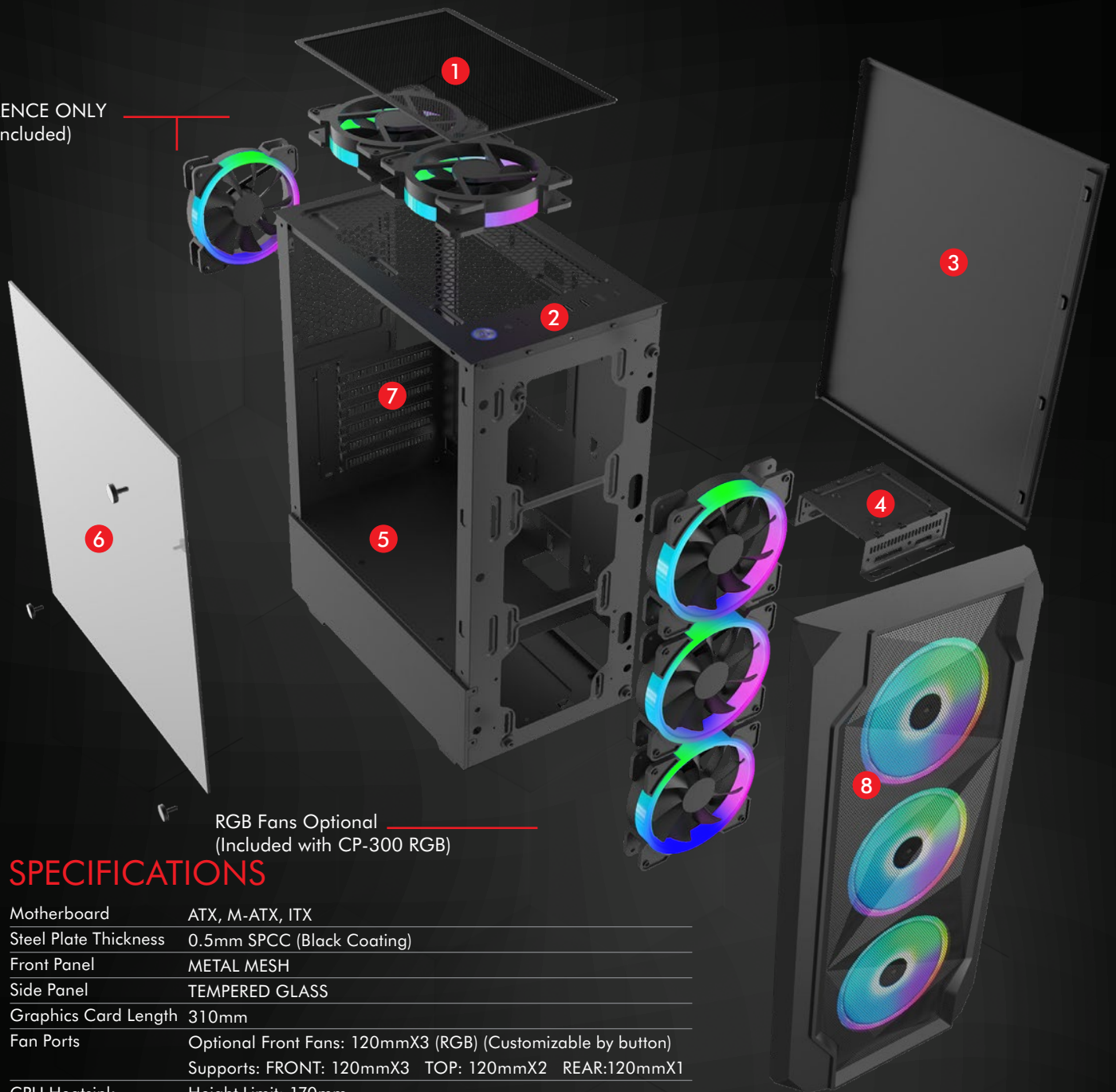


- 1 PVC DUST SCREEN
- 2 I / O FACE PLATE
- 3 STEEL PLATE
- 4 HDD BRACKET
- 5 POWER SUPPLY COMPARTMENT
- 6 TEMPERED GLASS
- 7 CARD SLOT
- 8 FRONT COVER

# SCHEMATIC DIAGRAM

CP-300 / CP-300 RGB

FOR REFERENCE ONLY  
(Fans Not Included)



RGB Fans Optional  
(Included with CP-300 RGB)

## SPECIFICATIONS

Motherboard	ATX, M-ATX, ITX
Steel Plate Thickness	0.5mm SPCC (Black Coating)
Front Panel	METAL MESH
Side Panel	TEMPERED GLASS
Graphics Card Length	310mm
Fan Ports	Optional Front Fans: 120mmX3 (RGB) (Customizable by button) Supports: FRONT: 120mmX3 TOP: 120mmX2 REAR:120mmX1
CPU Heatsink	Height Limit: 170mm
Water Cooling	FRONT: 360mm TOP: 280mm
I/O Interface	USB 3.0 * 1 + USB 1.0 * 2 + HD.AUDIO
Drive Bays	HDD*1 +SSD*2
PCI Expansion Slots	6
Weight	3.9KG
Chasis Size	14.8 * 7.9 * 17.7 inches
Carton	19 * 9.9 * 16.9 inches
Bonus	Magnetic Dust Filters

# ***PRO SERIES*** ***COMPUTER CASE***

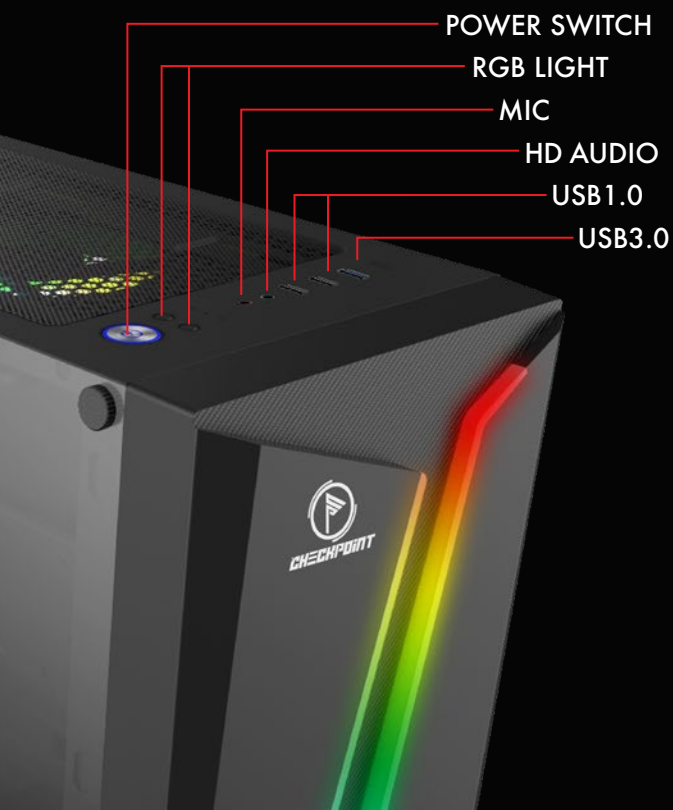
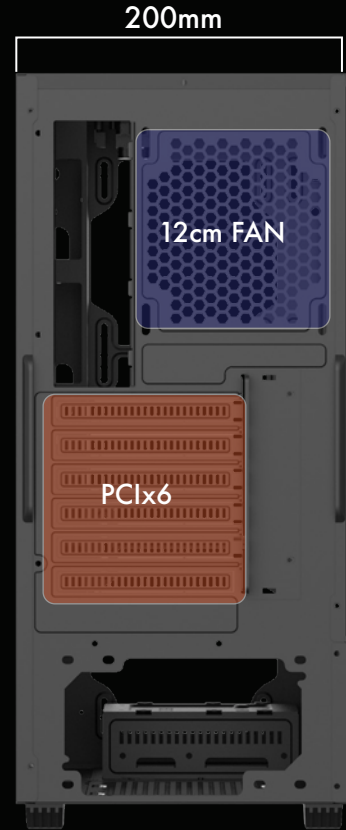
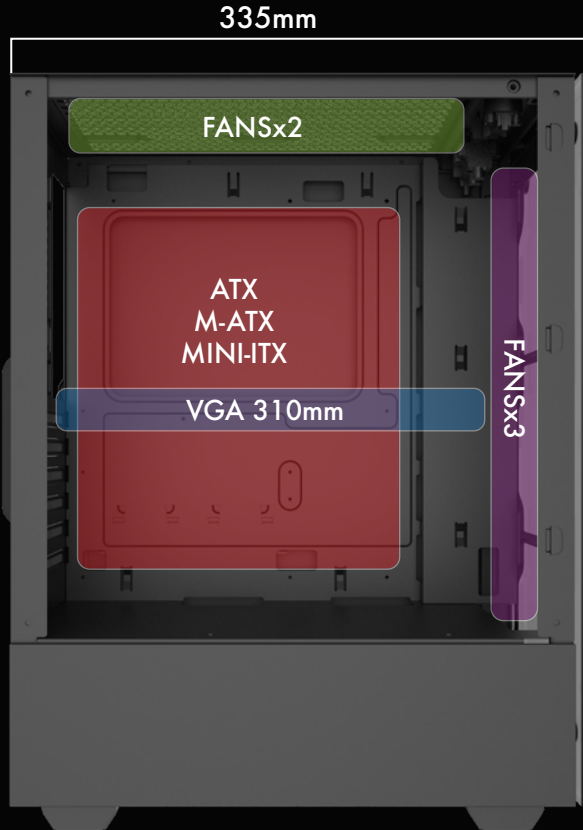
*Gaming Cool*



**CP-400**

# PRO SERIES COMPUTER CASE

Gaming Cool



# SCHEMATIC DIAGRAM

CP-400

- 1 PVC DUST SCREEN
- 2 I / O FACE PLATE
- 3 STEEL PLATE
- 4 HDD BRACKET
- 5 POWER SUPPLY COMPARTMENT
- 6 TEMPERED GLASS
- 7 CARD SLOT
- 8 FRONT COVER

FOR REFERENCE ONLY  
(Fans Not Included)

FOR REFERENCE ONLY  
(Fans Not Included)

## SPECIFICATIONS

Motherboard	ATX, M-ATX, ITX
Steel Plate Thickness	0.5mm SPCC (Black Coating)
Front Panel	ABS WITH RGB STRIPS
Side Panel	TEMPERED GLASS
Graphics Card Length	310mm
Fan Ports	Included RGB Front STRIP (Customizable by button) SUPPORTS: FRONT: 120mmX3 TOP: 120mmX2 REAR:120mmX1
CPU Heatsink	Height Limit: 170mm
Water Cooling	FRONT: 360mm TOP: 280mm
I/O Interface	USB 3.0 * 1 + USB 1.0 * 2 + HD.AUDIO
Drive Bays	HDD*1 +SSD*2
PCI Expansion Slots	6
Weight	3.9KG
Chasis Size	14.8 * 7.9 * 17.7 inches
Carton	19 * 9.9 * 16.9 inches
Bonus	Magnetic Dust Filters



# ***PRO SERIES*** ***COMPUTER CASE***

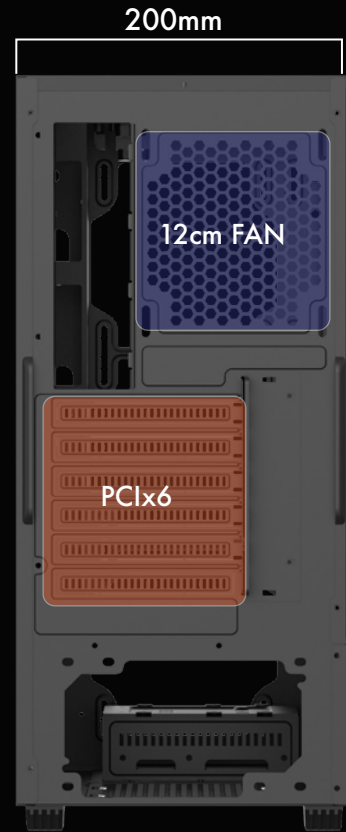
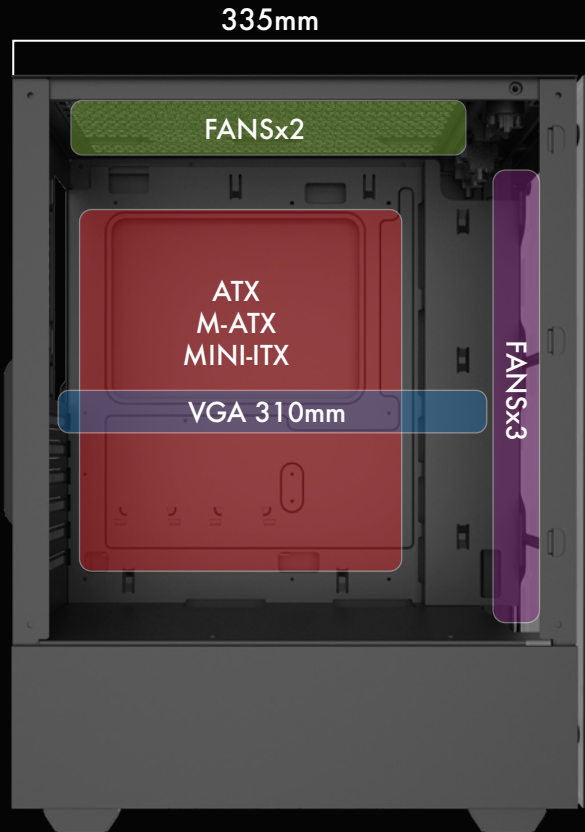
*Gaming Cool*



**CP-500**  
**CP-500 RGB**

# PRO SERIES COMPUTER CASE

Gaming Cool

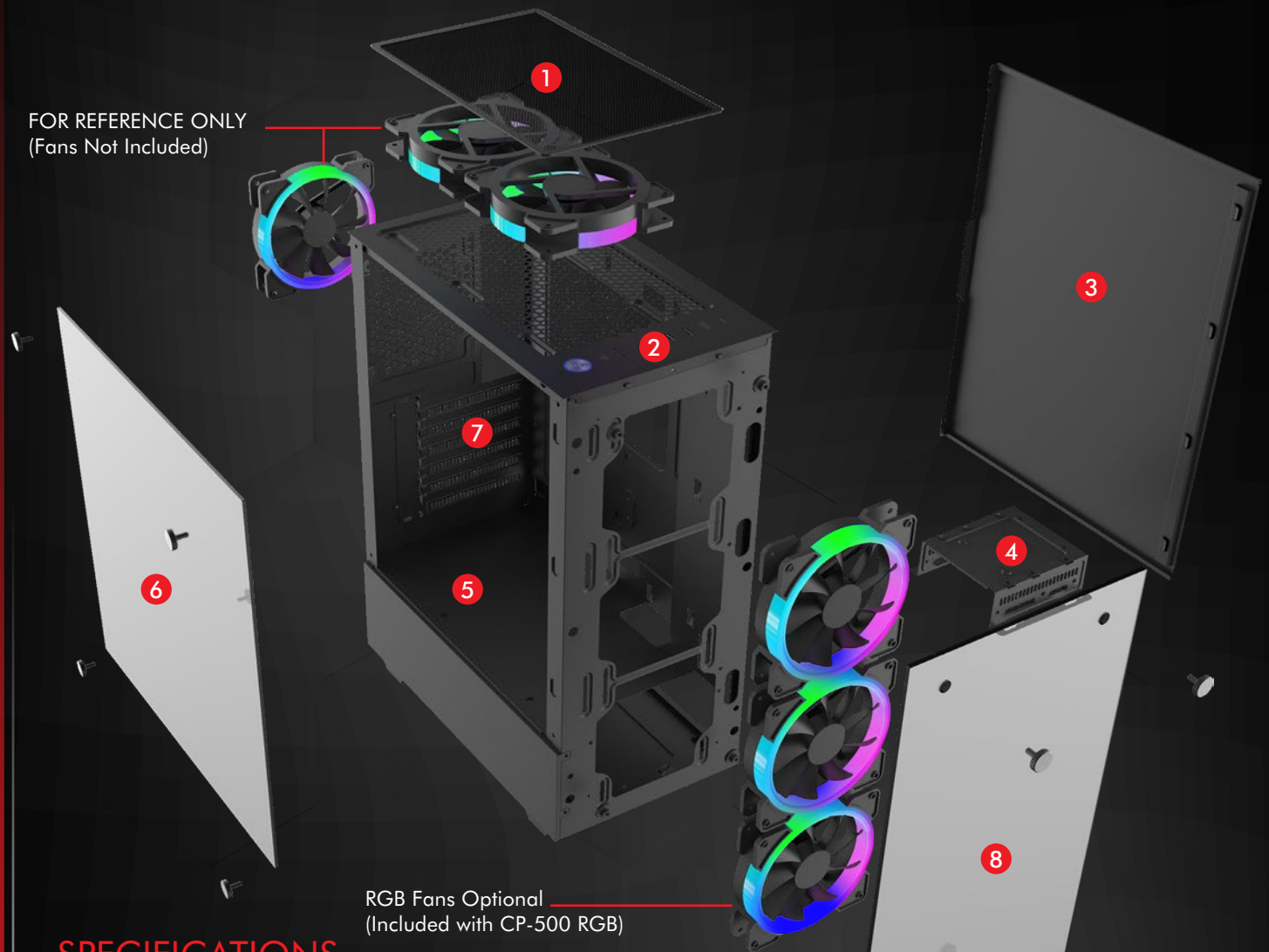


- 1 PVC DUST SCREEN
- 2 I / O FACE PLATE
- 3 STEEL PLATE
- 4 HDD BRACKET
- 5 POWER SUPPLY COMPARTMENT
- 6 TEMPERED GLASS
- 7 CARD SLOT
- 8 FRONT COVER

# SCHEMATIC DIAGRAM

CP-500 / CP-500 RGB

FOR REFERENCE ONLY  
(Fans Not Included)



## SPECIFICATIONS

Motherboard	ATX, M-ATX, ITX
Steel Plate Thickness	0.5mm SPCC (Black Coating)
Front Panel	TEMPERED GLASS
Side Panel	TEMPERED GLASS
Graphics Card Length	310mm
Fan Ports	Optional Front Fans: 120mmX3 (RGB) (Customizable by button) Supports: FRONT: 120mmX3 TOP: 120mmX2 REAR:120mmX1
CPU Heatsink	Height Limit: 170mm
Water Cooling	FRONT: 360mm TOP: 280mm
I/O Interface	USB 3.0 * 1 + USB 1.0 * 2 + HD.AUDIO
Drive Bays	HDD*1 +SSD*2
PCI Expansion Slots	6
Weight	3.9KG
Chasis Size	14.8 * 7.9 * 17.7 inches
Carton	19 * 9.9 * 16.9 inches
Bonus	Magnetic Dust Filters

# ***PRO SERIES*** ***COMPUTER CASE***

*Gaming Cool*

**CP-600 RGB**

CHECKPOINT

**PRO SERIES**  
**COMPUTER CASE**  
Gaming Cool

**CP-600 (RGB) PC Case**

Motherboard: E-ATX / ATX  
Material: SPCC 0.55mm metal  
INCLUDES 3 front RGB FANS (120mm)  
RGB fans controlled by button in I/O interface  
Metal mesh front panel  
Tempered glass side panel (hinge door)  
I/O Interface: USB 3.0 \* 1 + USB 1.0 \* 2 + HD AUDIO + RGB Control  
310mm Max graphics card length  
Drive bays: HDD\*2 + SSD\*2  
CPU Heatsink height limit: 165mm  
Fan support:  
FRONT: 120mm\*3 or 140mm\*3  
TOP: 120mm\*2 or 140mm\*2  
REAR: 120mm\*1  
Water cooling support:  
FRONT: 360mm  
TOP: 240mm  
PCI Expansion Slots: 7  
Weight: N.W 5.0KGS / G.W 5.9KGS (Fans Included)  
Magnetic Dust Filters  
Chassis size: 335\*210\*468mm  
Carton size: 530\*265\*425mm

CP-CA-1005

FOR REFERENCE ONLY  
(Fans Not Included)

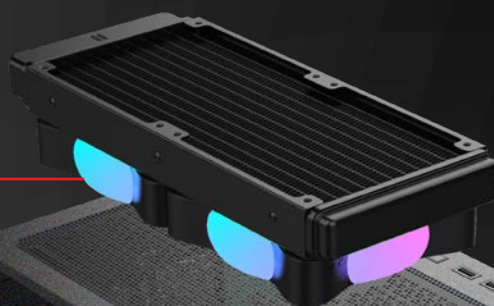


# SCHEMATIC DIAGRAM

CP-600 RGB



FOR REFERENCE ONLY  
(Fans Not Included)



FOR REFERENCE ONLY  
(Fans Not Included)

***PRO SERIES***  
***COMPUTER CASE***

*Gaming Cool*

**CP-700 RGB**

CHECKPOINT

**PRO SERIES**  
**COMPUTER CASE**  
Gaming Cool

**CP-700 (RGB) PC Case**

Motherboard: E-ATX / ATX  
Material: SPCC 0.55mm metal  
INCLUDES 3 front RGB FANS (120mm)  
RGB fans controlled by button in I/O interface  
Tempered glass front panel  
Tempered glass side panel (hinge door)  
I/O Interface: USB 3.0 \* 1 + USB 1.0 \* 2 + HD AUDIO + RGB Control  
310mm Max graphics card length  
Drive bays: HDD\*2 + SSD\*2  
CPU Heatsink height limit: 165mm  
Fan support:  
FRONT: 120mm\*3 or 140mm\*3  
TOP: 120mm\*2 or 140mm\*2  
REAR: 120mm\*1  
Water cooling support:  
FRONT: 360mm  
TOP: 240mm  
PCI Expansion Slots: 7  
Weight: N.W 5.3KGS / G.W 6.22KGS (Fans Included)  
Magnetic Dust Filters  
Chassis size: 335\*210\*468mm  
Carton size: 530\*265\*425mm

CP-CA-1006

FOR REFERENCE ONLY  
(Fans Not Included)



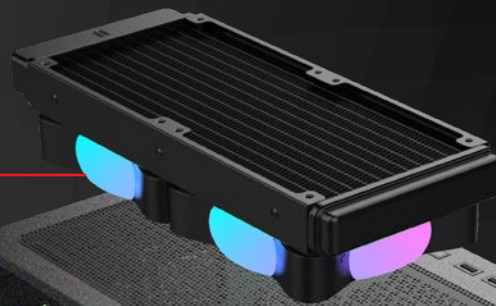


# SCHEMATIC DIAGRAM

CP-700 RGB



FOR REFERENCE ONLY  
(Fans Not Included)



FOR REFERENCE ONLY  
(Fans Not Included)

***PRO SERIES***  
***COMPUTER CASE***

*Gaming Cool*

**CP-800 RGB**

**CHECKPOINT**

# PRO SERIES COMPUTER CASE

Gaming Cool

## CP-800 (RGB) PC Case

Motherboard: E-ATX / ATX

Material: SPCC 0.55mm metal

RGB strips in front panel + ABS

RGB lights controlled by button in I/O interface

Tempered glass side panel (hinge door)

I/O Interface: USB 3.0 \* 1 + USB 1.0 \* 2 + HD AUDIO + RGB Control

310mm Max graphics card length

Drive bays: HDD\*2 + SSD\*2

CPU Heatsink height limit: 165mm

Fan support:

FRONT: 120mm\*3 or 140mm\*3

TOP: 120mm\*2 or 140mm\*2

REAR: 120mm\*1

Water cooling support:

FRONT: 360mm

TOP: 240mm

PCI Expansion Slots: 7

Weight: N.W 4.6KGS / G.W 5.5KGS

Magnetic Dust Filters

Chassis size: 335\*210\*468mm

Carton size: 530\*265\*425mm

CP-CA-1007

FOR REFERENCE ONLY  
(Fans Not Included)

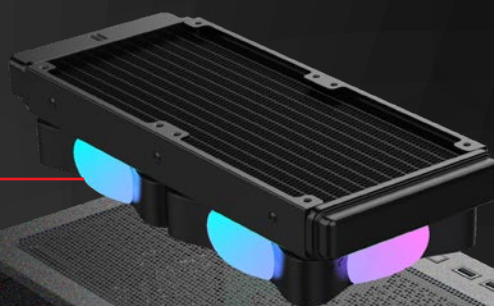


# SCHEMATIC DIAGRAM

CP-800 RGB



FOR REFERENCE ONLY  
(Fans Not Included)



FOR REFERENCE ONLY  
(Fans Not Included)



FOR REFERENCE ONLY  
(Fans Not Included)

***PRO SERIES***  
***COMPUTER CASE***

*Gaming Cool*

**CP-850 RGB**

**CHECKPOINT**

**PRO SERIES**  
**COMPUTER CASE**  
Gaming Cool

**CP-850 (RGB) PC Case**

Motherboard: E-ATX / ATX  
Material: SPCC 0.55mm metal  
RGB strips in front panel + ABS (White)  
RGB lights controlled by button in I/O interface  
Tempered glass side panel (hinge door)  
I/O Interface: USB 3.0 \* 1 + USB 1.0 \* 2 + HD AUDIO + RGB Control  
310mm Max graphics card length  
Drive bays: HDD\*2 + SSD\*2  
CPU Heatsink height limit: 165mm  
Fan support:  
FRONT: 120mm\*3 or 140mm\*3  
TOP: 120mm\*2 or 140mm\*2  
REAR: 120mm\*1  
Water cooling support:  
FRONT: 360mm  
TOP: 240mm  
PCI Expansion Slots: 7  
Weight: N.W 4.6KGS / G.W 5.5KGS  
Magnetic Dust Filters  
Chassis size: 335\*210\*468mm  
Carton size: 530\*265\*425mm

CP-CA-1008

FOR REFERENCE ONLY  
(Fans Not Included)

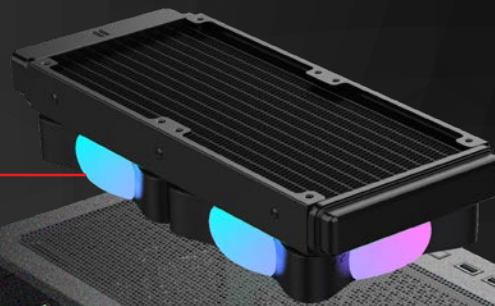


# SCHEMATIC DIAGRAM

CP-850 RGB



FOR REFERENCE ONLY  
(Fans Not Included)



FOR REFERENCE ONLY  
(Fans Not Included)



FOR REFERENCE ONLY  
(Fans Not Included)



**CHECKPOINT**

[cpgaming.net](http://cpgaming.net)